

READ THE LABEL BEFORE USING
(SOMA KIBANDIKO CHA MAELEZO KABLA YA
KUTUMIA)

KEEP LOCKED OUT OF REACH OF CHILDREN
(WEKA MBALI NA WATOTO)

REGISTRATION NO. (NAMBARI YA USAJILI): PCPB (CR) 1583

ml
800

 **BASF**

We create chemistry

700

Stellar® Star 210 SL

Soluble Concentrate
HERBICIDE (KIUGUGU)

GUARANTEE:
(DHAMANA)

Topramezone 50 g/l
Dicamba 160 g/l

COMMERCIAL AND AGRICULTURAL CLASS
(KUNDI LA KILIMO NA BIASHARA)

Post emergence selective herbicide for the control of annual grasses and broadleaf weeds in maize.

„NOT FOR USE IN BABYCORN OR SWEETCORN“
Kiuagugu cha kudhibiti magugu ya matawi mapana na nyasi kwenye mahindi.
„ISITUMIKE KATIKA BABYCORN NA SWEETCORN“

Shelf life: Two years from the date of manufacture in tightly sealed original unopened containers under cool and dry storage conditions.

Maisha Rafuni: Miaka miwili kutoka tarehe ya kutengenezwa ikiwa katika chombo chake asili kisichofunguliwa na ikiwekwa pahali pakavu pasipo na joto jingi.

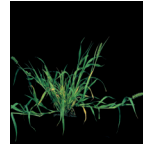
In case of poisoning call Toll Free number
0800720021 / 0800730030 (24 Hrs)

(Wakati wa madhara piga nambari bila malipo
0800720021 / 0800730030(masaa 24)

Net Contents(Kipimo Kamili):

1 L

WHO Class III: Slightly Hazardous



MANUFACTURER/REGISTRANT
(MTENGENEZAJI):
BASF SE, GERMANY

AGENT (AJENTI):
BASF EAST AFRICA LIMITED
P.O. BOX 24271-00100
NAIROBI
TELEPHONE: +254 20 4443454

MANUFACTURING DATE
(TAREHE YA KUTENGEZWA):
SEE ANOTHER PLACE ON THE LABEL
(MAELEZO YAPO KWINGINE KWENYE KIBANDIKO HIKI)

BATCH NUMBER
(NAMBARI YA FURUSHI):
SEE ANOTHER PLACE ON THE LABEL
(MAELEZO YAPO KWINGINE KWENYE KIBANDIKO HIKI)

EXPIRY DATE
(TUMIA KABLA YA):
SEE ANOTHER PLACE ON THE LABEL
(MAELEZO YAPO KWINGINE KWENYE KIBANDIKO HIKI)



Protect to Provide
MEMBERSHIP NUMBER AAK/220



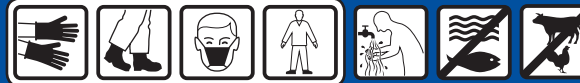
® = Registered Trademark of BASF

81122571KE1107

200
ml



CAUTION
TAHADHARI



DIRECTIONS FOR USE:

Stellar® Star 210 SL is a post emergence selective herbicide for the control of annual grasses and broad leaf weeds in maize.

Not for use in Babycorn and sweet corn.

MODE OF ACTION:**Topramezone – HRAC class F2**

Topramezone inhibits 4-hydroxyphenylpyruvate dioxygenase (4-HPPD) in the biosynthesis of plastoquinones and tocopherols. It therefore also indirectly inhibits the formation of carotenoids. This disrupts the formation and function of chloroplasts.

Dicamba – HRAC class O

Dicamba belongs to the chemical group of benzoic acid derivatives and works primarily by changing the auxin level of the plants. Application of dicamba disrupts normal cell growth and plant development, resulting in the accumulation of ethylene, which in susceptible plants causes uncoordinated growth and death.

MIXING INSTRUCTIONS:

1. Half fill the spray tank with clean water and start agitation.
2. Shake the products before opening and measure the required amounts and add into the spray tank. Fill the tank with clean water and continue agitation or recirculation.
3. Homogenize the spray wash by agitation (e.g. recirculation or stirring) during spraying.

RATE OF APPLICATION/SPRAY INTERVAL:

CROP	RATE	WEEDS	REMARKS
Maize	1.0 L/ha in 200 L Water(100 ml/20 L of water - based on 10 Knapsacks per ha).	Annual grasses and broadleaf weeds as listed below.	Apply Stellar® Star 210 SL as an early post-emergence application at 3-4 leaf stage of the weeds. This is usually 20 - 29 days after planting. Do not spray over the top of the maize when it has reached 80 cm. If the maize has reached 80 cm apply Stellar® Star 210 SL between rows.

RE-ENTRY INTERVAL: 24 Hours, unless wearing protective clothing.

PHI: 60 days

WEEDS CONTROLLED INCLUDE:

White goose foot	<i>Chenopodium album</i>
Apple of Peru	<i>Nicandra physalodes</i>
Black jack	<i>Bidens pilosa</i>
Pig weed	<i>Amaranthus hybridus</i>
Jimson weed	<i>Datura stramonium</i>
Wood Sorrel	<i>Oxalis latifolia</i>
Gallant soldier	<i>Galinsoga parviflora</i>
Multiflora rose	<i>Rosa multiflora</i>
Mexican marigold	<i>Tagetes minuta</i>
Common Purslane	<i>Portulaca oleracea</i>
Yellow foxtail	<i>Setaria pumila</i>

RESISTANCE MANAGEMENT:

As a resistance management practice, avoid exclusive, repeated use of herbicides, from the same herbicide group codes. Integrate other control methods (cultural, mechanical, chemical rotation, crop rotation, biological etc.) into weed control programmes.

WAITING PERIOD FOR FOLLOW-UP CROPS:

- To avoid possible damage to follow-up crops, the waiting periods as indicated below should be adhered to between the last application of Stellar® Star 210 SL and the planting of the follow-up crop.
- However, the waiting periods mentioned here will only be valid if the standard, recommended Stellar® Star 210 SL rate was applied.

CROP	WAITING PERIOD
Maize, sugarcane	No waiting period
Grain sorghum	2 months
Wheat, barley	4 months
Potatoes	6 months
Beans, soybeans, groundnuts, peas	6 months
All other crops	10 months

Warning: Possible damage to triazine and topramezone sensitive crops

- Where soils have been treated with lime to correct the soil pH, the possibility of crop damage increases dramatically in fields where triazines and/or topramezone were previously applied. This is due to the herbicide molecules being replaced on the clay complex with calcium cations and the herbicide thus becoming more available in the soil-water complex.
- If soils have been treated with lime, only maize should be planted in the season directly after treatment. Sensitive crops like beans, soybeans, sunflowers and all cereals (e.g. wheat) should not be planted in the season after lime treatment since crop damage might occur. This applies even if triazines were used during crop rotation in previous years.

SAFETY PRECAUTIONS:

Do not eat, drink or smoke while handling this product. Avoid eye contact. Avoid exposure by wearing cotton overalls or long sleeve cotton shirt and long trouser, eye shield, nitrile rubber or neoprene gloves, and boots/shoes when preparing the spray mixture. When spraying put on gloves, overall and boots/shoes. Wash hands and exposed skin before eating, drinking, smoking or using the toilet. Take a shower/bath after work. Should not be applied by pregnant women or of child bearing age.

LEAK AND SPILLS:

Use personal protective clothing. Avoid contact with the skin, eyes and clothing. Remove contaminated clothes, under garments and shoes immediately.

Methods for cleaning up or taking up:

For small amounts: Contain with dust binding material and dispose of.

For large amounts: Sweep/shovel up.

Collect waste in suitable containers, which can be labeled and sealed. Clean contaminated floors and objects thoroughly with water and detergents, observing environmental regulations. Dispose of absorbed material in accordance with regulations.

STORAGE:

Store in original containers under cool dry conditions in secure well ventilated buildings away from foodstuffs and animal feeds. Keep out of reach of children.

Protection against fire and explosion:

Prevent electrostatic charge - sources of ignition should be kept well clear - fire extinguishers should be kept handy. Vapours may form ignitable mixture with air.

Further information on storage conditions: Keep away from heat. Protect against moisture. Protect from direct sunlight.

WASTE DISPOSAL:

Empty packs should be vigorously shaken into the spray tank. Destroy empty containers by puncturing holes on them and liners to prevent re-use. On emptying the container, rinse thoroughly by using an integrated pressure rinsing device or manually rinsing three times. Add washings to sprayer at time of filling and dispose of container safely in accordance with national legislation and regulations.

ENVIRONMENTAL HAZARDS:

Toxic to aquatic organisms, may cause long term adverse effects in the aquatic environment.

FIRST AID MEASURES:

General advice: First aid personnel should pay attention to their own safety. If the patient is likely to become unconscious, place and transport in stable sideways position (recovery position). Immediately remove contaminated clothing.

If inhaled: Keep patient calm, remove to fresh air, and seek medical attention.

On skin contact: Immediately wash thoroughly with soap and water, seek medical attention.

On contact with eyes: Wash affected eyes for at least 15 minutes under running water with eyelids held open, consult an eye specialist.

On ingestion: Immediately rinse mouth and then drink 200-300 ml of water, seek medical attention.

TAKE PATIENT TO DOCTOR**TOXICOLOGICAL INFORMATION:**

Signs and Symptoms of Poisoning: May cause harm to the unborn child.

Poisoning Antidote: There is no specific antidote for exposure to this product.

Treatment of exposure should be directed at the control of the symptoms and the clinical conditions.

NOTE TO PHYSICIAN: Treat according to symptoms (decontamination, vital functions), no known specific antidote.

In case of poisoning call Toll Free number 0800720021/0800730030 (24 Hrs)

WARRANTY:

Seller's guarantee is limited to the terms set out on the label and subject thereto, the buyer assumes the risks to persons or property arising from the use or handling of this product and accepts the product on that condition.

NOTICE TO USERS:

This pest control product is to be used only in accordance with the directions on this label. It is an offence under the Pest Control Products Act to use or store a pest control product under unsafe conditions.

MAPENDEKEZO YA UTUMIAJI:

Stella® Star 210 SL kiuagugucha kudhibiti magugu ya matawi mapana na nyasi kwenye mahindi. **Isitumike katika Babycorn na sweetcorn.**

JINSI INAVYOFANYA KAZI:**Topramezone – HRAC class F2**

Topramezone huzuia 4-hydroxyphenylpyruvate dioxygenase (4-HPPD) kwa utengenezaji wa 'plastoquinones' na 'tocopherols'. Hivyo basi inazuia utengenezaji wa 'carotenoids' na kusababisha kutofanya kazi kwa 'chloroplasts'.

Dicamba – HRAC class 0

Dicamba iko kwa kikundi cha kemikali cha acidi za 'benzoic' na hufanya kazi kwa kubadilisha viwango vya 'auxin' kwenye mmea. Kunyunyiziwa kwa dicamba kunazuia ukuaji wa kawaida wa seli na mmea. Hivi basi kuna kuwa na uongezekaji wa 'ethylene' ambayo inasababisha kifo kwa mmea.

MAELEZO YA KUCHANGANYA:

1. Jaza tanki la kunyunyizia na maji safi hadi nusu.
2. akishaupimekiasikinachohitajikanauongezekwenyetankiyakUnyunyizla. Jaza tanki hilo na maji safi na uendeleo kuchanganya huku ukitikisa.
3. Koroga vizuri-mnyunyizo wako uko tayari.

KIPIMO CHA KUTUMIA/MUDA WA KURUDIA:

Mmea	Kipimo (Lita/hekta)	Magugu	Maelezo
Mahindi	Lita 1.0/hekta kwenye lita 200 za maji. (milimita 100/Lita 20 za maji)	Ya matawi makubwa pamoja na aina za nyasi hasa zile zinazokuwa mwaka baada ya mwaka	Nyunyiza Stellar® Star 210 SL wakati magugu yapo na matawi 3-4. Hii huwa siku 26-29, baada ya kupanda mbegu za mahindi. Usinyunyize dawa juu ya mahindi wakati umefikia urefu wa sentimita 80. Kama mahindi umefikia urefu wa sentimita 80 nyunyiza Stellar® Star 210 SL kati ya mistari ya mmea.

TAHADHARI: usitumie dawa hii kwa mahindi ya mbegu.

MUDA SALAMA KABLA YA KUVUNA: Siku 60

MUDA WA KUNGOJA KABLA KUIINGIA MAHALI PALIPONYUNYIZIWA DAWA: Usiingie mahala paliponyunyiziwa dawa kabla ya dawa kukauka na kabla ya masaa 24 kuisha.

MAGUGU YANAYOZUIWA:

White goose foot	<i>Chenopodium album</i>
Apple of Peru	<i>Nicandra physalodes</i>
Black jack	<i>Bidens pilosa</i>
Pig weed	<i>Amaranthus hybridus</i>
Jimson weed	<i>Datura stramonium</i>
Wood Sorrel	<i>Oxalis latifolia</i>
Gallant soldier	<i>Galinsoga parviflora</i>
Multiflora rose	<i>Rosa multiflora</i>
Mexican marigold	<i>Tagetes minuta</i>
Common Purslane	<i>Portulaca oleracea</i>
Yellow foxtail	<i>Setaria pumila</i>

UZOEFU WA MAGUGU:

Kwa kuzuia uzoefu wa magugu kutokana na mchanganyiko huu, viuagugu hivi na vingine vya kikundi kimoja na hiki vinapendekezwa visifuatanihwe kwenye msimu mmoja.

MUDA WA KUSUBIRI KWA MAZAO KUFUATILIA:

- Ili kuepuka uharibifu iwezekanavyo kwa mazao yatakayofuatilia, muda wa kusubiri kama ifuatavyo lazima kuzingatiwa kutoka matumizi ya mwisho ya Stellar® Star 210 SL na upandaji wa mazao yatakayofuatilia.
- Hata hivyo, vipindi kusubiri vilizotajwa hapa vitakuwa tu halali kama, kiwango cha Stellar® Star 210 SL kilichopendekezwa klitumika ipasavyo.

MAZAO	MUDA WA KUSUBIRI
Mahindi, miwa	Hakuna muda wa kusubiri
Mtama wa nafaka	Miezi miwili
Ngano, Shayiri	Miezi minne
Viazi	Miezi sita
Maharagwe, maharagwe aina ya soya, njugu, njegere	Miezi sita
Mazao mengine yote	Miezi kumi

Onyo: uharibifu unawezekana kwa mazao yanayoweza kukabiliwa na triazine na topramezone

- Ambapo udongo umekuwa ukitibiwa na chokaa ('lime') kusahihisha pH, kuna uwezekano wa uharibifu wa mazao kuongezeka kwa kasi katika mashamba ambapo triazines na / ama topramezone walikuwa awali wakitumika. Hii ni kutokana na kubadilishwa kwa molekuli za kiuagugu kwenye udongo (aina ya 'clay') na cations ya calcium hivyo basi kiuagugu kinapatikana kwa urahisi katika udongo-maji tata.
- Kama udongo umekuwa ukitibiwa na chokaa 'lime' mahindi tu pekee lazima kupandwa katika msimu, moja kwa moja baada ya matibabu. Mazao nyeti yanayoweza kukabiliwa kama maharagwe, maharagwe aina ya soya, ufuta na nafaka zote (mfano wa ngano) haipaswi kupandwa katika msimu baada ya matumizi ya chokaa 'lime' tangu uharibifu wa mazao inaweza kutokea. Hii inatumika hata kama triazines zilikumika wakati wa mzunguko wa mazao katika miaka ya nyuma

JINSI YA KUJIKINGA:

Usile, usinywe wala usivute sigara unapotumia dawa hii. Unapotumla mchanganyiko huu linda macho ukitumia miwani iliyopendekezwa, vaa nguo za kujikinga kama vile glovu, ovaroli na gambuti. Wakati wa kunyunyiza vaa kofia, glovu na gambuti zilizopendekezwa. Osha mikono na ngozi iliyoachiliwa kabla ya kula, kunywa, kuvuta sigara ama kwenda haja. Oga mwili baada ya kazi na ufue nguo za kujikinga na madhara ya dawa kabla ya kuzitumia tena. Haipaswi kutumiwa na wanawake wajawazito au umri wa kuzaa watoto.

DAWA IKIMWAGIKA:

Jikinga na nguo na vifaa vya kuzuia madhara ya dawa. Funika dawa iliyomwagika na mchanga au vumbi inayapatikana wakati mbao inapopasuliwa (sawdust) halafu uokote. Osha mahali au vifaa vilivyomwagikiwa na dawa kwa maji mengi na sabuni.

UWEKAJI:

Weka dawa ndani ya pakiti halisi mahala ambapo nikavu na hakuna joto nyingi, kuna hewa nyingi na ni mbali na chakula na watoto hawawezi kufikia.

KUTUPA MABAKI:

Haribu chombo cha dawa baada ya kuitumia dawa yote iliyomo. Osha chombo cha dawa mara tatu na umwage ule mwoyo kwenye tanki la kunyunyizia. Haribu chombo cha dawa baada ya kuitumia dawa yote iliyomo ukitupe kuambatana na sheria zilizoko kwenye nchi.

HADHARA KWA MAZINGIRA:

Ina madhara kwa samaki na viumbe vingine vinavyoishi kwenye maji. Inaweza kusababisha madhara ya muda mrefu kwenye maji.

HUDUMA YA KWANZA:

Ikivutwa: Peleka mgonjwa kwa hewa safi muone daktari maumivu yakiendelea.

Kushikwa kwa Ngozi: Ondoa mavazi yenye dawa mara moja na usafishe ngozi iliyopata dawa kwa maji na sabuni.

Ikiingia kwa Macho: Osha macho kwa maji nyingi safi. Maumivu ikiendelea muone daktari.

Ikimezwa: Ikiwa hajazimia mpe mjeruhi maji mengi kiasi cha milimita 200-300. Mpeleke kwa daktari.

PELEKA MJERUHI KWA DAKTARI

MAELEZO KUHUSU SUMU:

Dalili ya Kupatwa na Sumu: Inaweza kudhuru viumbe ambao hawajazaliwa.

Kinga ya Hatari: Hakuna. Tibu kufuatia dalili za ugonjwa.

Maagizo kwa Daktari: Tibu mgonjwa kulingana na dalili za ugonjwa.

Kukiwa na madhara yoyote piga nambari bila malipo kwa 0800720021/ 0800730030 (Masaa 24)

THIBITISHO:

Dhamana ya Muuzaji ni maelezo yaliyo kwenye kibandiko ambayo ni lazima yafuatwe kikamilifu. Mnunuzi lazima akubali hatari zozote zinaweza kutokana na matumizi ya dawa hii kwa binadamu au mali na lazima aikubali dawa hii katika hali hiyo.

ILANI KWA WATUMIAJI:

Dawa hii sharti itumiwe kulingana na maagizo kwenye kibandiko hiki tu. Ni hatia chini ya Sheria za madawa ya kuangamiza wadudu waharibifu kutumia au kuweka dawa hii mahala pasipo usalama.

READ THE LABEL BEFORE USING
(SOMA KIBANDIKO CHA MAELEZO KABLA YA
KUTUMIA)

KEEP LOCKED OUT OF REACH OF CHILDREN
(WEKA MBALI NA WATOTO)

REGISTRATION NO. (NAMBARI YA USAJILI): PCPB (CR) 1583

ml
800



We create chemistry

700

Stellar® Star 210 SL

Soluble Concentrate
HERBICIDE (KIUAGUGU)

GUARANTEE:
(DHAMANA)

Topramezone 50 g/l
Dicamba 160 g/l

COMMERCIAL AND AGRICULTURAL CLASS
(KUNDI LA KILIMO NA BIASHARA)

Post emergence selective herbicide for the control of annual grasses and broadleaf weeds in maize.

„NOT FOR USE IN BABYCORN OR SWEETCORN“
Kiuagugu cha kudhibiti magugu ya matawi mapana na nyasi kwenye mahindi.
„ISITUMIKE KATIKA BABYCORN NA SWEETCORN“

Shelf life: Two years from the date of manufacture in tightly sealed original unopened containers under cool and dry storage conditions.

Maisha Rafuni: Miaka miwili kutoka tarehe ya kutengenezwa ikiwa katika chombo chake asili kisichofunguliwa na ikiwekwa pahali pakavu pasipo na joto jingi.

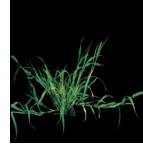
In case of poisoning call Toll Free number
0800720021 / 0800730030 (24 Hrs)

(Wakati wa madhara piga nambari bila malipo
0800720021 / 0800730030(masaa 24)

Net Contents(Kipimo Kamili):

1 L

WHO Class III: Slightly Hazardous



MANUFACTURER/REGISTRANT
(MTENGENEZAJI):
BASF SE, GERMANY

AGENT (AJENTI):
BASF EAST AFRICA LIMITED
P.O. BOX 24271-00100
NAIROBI
TELEPHONE: +254 20 4443454

MANUFACTURING DATE
(TAREHE YA KUTENGEZWA):
SEE ANOTHER PLACE ON THE LABEL
(MAELEZO YAPO KWINGINE KWENYE KIBANDIKO HIKI)

BATCH NUMBER
(NAMBARI YA FURUSHI):
SEE ANOTHER PLACE ON THE LABEL
(MAELEZO YAPO KWINGINE KWENYE KIBANDIKO HIKI)

EXPIRY DATE
(TUMIA KABLA YA):
SEE ANOTHER PLACE ON THE LABEL
(MAELEZO YAPO KWINGINE KWENYE KIBANDIKO HIKI)



Protect to Provide
MEMBERSHIP NUMBER AAK/220

® = Registered Trademark of BASF

81122571KE1107

200
ml



CAUTION
TAHADHARI

