

BASF

We create chemistry

Stomp[®] 455 CS

Capsule Suspension
HERBICIDE (KIUGUGU)

GUARANTEE (DHAMANA):
Pendimethalin 455 g/l

COMMERCIAL AND AGRICULTURAL CLASS
(KUNDI LA KILIMO NA BIAHARA)

GROUP (KUNDI)	K1	HERBICIDE (KIUGUGU)
--------------------------	-----------	--------------------------------

A pre-emergent herbicide for the control of Setaria spp. in barley, annual grasses and some broad leaf weeds in wheat, sugarcane and maize.

(Kiuagugu kinachotumika kuzuia nyasi aina ya Setaria kwenye Shayiri na magugu ya matawi mapana na aina za nyasi kwenye ngano, miwa na mahindi.)

Shelf life: Two years from the date of manufacture in tightly sealed original unopened container under cool and dry storage conditions.

(**Maisha Rafuni:** Miaka miwili kutoka tarehe ya kutengenezwa ikiwa katika chombo chake maalum isipofunguliwa na ikiwekwa katika pahlali pakavu pasipo na joto jingi.)

In case of poisoning call Toll Free number
0800720021/0800730030 (24Hrs).

(Wakati wa madhara piga nambari bila malipo
0800720021/0800730030 (Masaa 24).)

Net Content (Kipimo Kamili):

10 L

WHO Class III: Slightly Hazardous

**READ THE LABEL
BEFORE USING**
(SOMA KIBANDIKO
CHA MAELEZO
KABLA YA KUTUMIA)

**KEEP LOCKED OUT OF
REACH OF CHILDREN**
(WEKA MBALI NA
WATOTO)

REGISTRATION NO. (NAMBARI YA USAJILI):
PCPB (CR) 1066

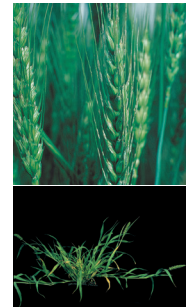
**REGISTRANT / MANUFACTURER (MSAJILI /
MTENGENEZAJI):**
BASF SE, GERMANY

AGENT (AJENTI):
BASF EAST AFRICA LIMITED
P.O. BOX 24271-00100
NAIROBI
TELEPHONE: + 254 20 4443454
Email: info.eastafrica@basf.com

**MANUFACTURING DATE: SEE ANOTHER
PLACE ON THE LABEL OR PACKAGING**
(TAREHE YA KUTENGENEZWA): (MAELEZO
YAPO KWINGINE KWENYE KIBANDIKO HIKI)

**BATCH NUMBER: SEE ANOTHER PLACE ON
THE LABEL OR PACKAGING**
(NAMBARI YA FURUSHI): (MAELEZO YAPO
KWINGINE KWENYE KIBANDIKO HIKI)

**EXPIRY DATE: SEE ANOTHER PLACE ON THE
LABEL OR PACKAGING**
(TUMIA KABLA YA): (MAELEZO YAPO
KWINGINE KWENYE KIBANDIKO HIKI)



Protect to Provide

Membership Number:
Nambari ya Uanachama: **AAK/220**

® = Registered trademark of BASF (Alama ya biashara iiyosajiliwa ya BASF)

81139537 KE 1129



**CAUTION
(TAHADHARI)**



Stomp® 455 CS

DIRECTIONS FOR USE:

Stomp® 455 CS is a capsule suspension selective herbicide that releases slowly the active ingredient into the soil depending on the amount of moisture in the soil. A pre-emergent herbicide for the control of *Setaria* spp. in barley; annual grasses and some broad leaf weeds in wheat, sugarcane and maize.

MODE OF ACTION:

Stomp® 455 CS is a meristematic inhibitor that interferes with the plant's cellular division or mitosis.

MIXING INSTRUCTIONS:

1. Half fill the spray tank with clean water and start agitation.
2. Shake the product before opening and measure the required amount of Stomp® 455 CS and add into the spray tank. Add clean water and continue agitation or recirculation to the recommended volume.
3. Homogenize the spray wash by agitation (e.g. recirculation or stirring) during spraying.

RATE OF APPLICATION/SPRAY INTERVAL

Crop	Disease	Rate	Time of application	Remarks
Barley	<i>Setaria</i> spp.	3,0 L/ha or 300 ml in 20 l of water	Applied once.	Stomp® 455 CS is capsulated and can be applied on dry soils. Some soil moisture must be present for the product to be activated. Best results will be obtained if rainfall or irrigation occurs within seven days of application. Residual control may be reduced: - Under prolonged dry conditions - On soils with a high Kd factor - Where organic matter exceeds 6% - Where ash content is high
Wheat	Please see weed spectrum below	Use spray volume of 200 L/ha	Pre-emergence of the crop. Apply Stomp® 455 CS as soon as possible after sowing.	
Maize		Pre-emergence application to weeds, in plant and ratoon cane.		
Sugarcane			3,5 L/ha or 350 ml in 20 l of water Use spray volume of 200 L/ha	

PHI: 90 days for barley, wheat, sugarcane and maize.

WEEDS CONTROLLED:

All weed susceptibility ratings in the table below are for applications made pre-emergence of the weeds.

Annual grass weeds controlled by Stomp® 455 CS

Scientific name	Common name
<i>Brachiaria brizantha</i>	Signal grass
<i>Chloris virgata</i>	Feather top chloris
<i>Chloris pycnothrix</i>	Spider web chloris
<i>Digitaria sanguinalis</i>	Crab finger grass
<i>Echinochloa colona</i>	Jungle grass
<i>Echinochloa crus-galli</i>	Barnyard grass
<i>Eleusine indica</i>	Goose grass
<i>Eragrostis spp.</i>	Love grass
<i>Panicum schinzii</i>	Sweet buffalo grass
<i>Rottboellia conchinchinensis</i>	Guinea fowl grass
<i>Setaria verticillata</i>	Sticky bristle grass
<i>Tragus racemosus</i>	Bur bristle grass
<i>Urochloa panicoides</i>	Garden urochloa

Annual broadleaf weeds controlled by Stomp 455 CS

Scientific name	Common name
<i>Amaranthus hybridus</i>	Pigweed
<i>Amaranthus spinosus</i>	Red pigweed
<i>Amaranthus thurnbergii</i>	Thorny pigweed
<i>Chenopodium album</i>	White goosefoot
<i>Portulaca oleracea</i>	Common purslane
<i>Richardia scarbra</i>	Mexican clover

RE-ENTRY INTERVAL: 24 Hours, unless wearing protective clothing.

RESISTANCE MANAGEMENT:

For resistance management, Stomp® 455 CS is a HRAC Group Code K1 herbicide. Any weed population may contain individuals, naturally resistant to Stomp® 455 CS and other Group Code K1 herbicides. These resistant individuals, can eventually dominate the weed population, if these herbicides are used repeatedly and exclusively in programmes. These resistant weeds may not be controlled by Stomp® 455 CS, or any other Group Code K1 herbicides.

To delay herbicide resistance:

- Avoid exclusive repeated use of herbicides from the same Herbicide Group Code. Alternate or tank-mix with products, from different Herbicide Group Codes.
- For tank mixing or alternation with products in other Herbicide Group Codes, refer to applicable individual product labels.
- Integrate other control methods (chemical and cultural), into weed control programmes.

SAFETY PRECAUTIONS:

Wear suitable protective clothing (coveralls) and suitable protective gloves when handling the concentrate or contaminated surfaces. Wear safety glasses and body protection garments. Wash hands and/or face before breaks and at the end of the shift. Do not eat drink, or smoke when handling this product. Prevent spray drift onto other crops, grazing, rivers and dams. Ensure through ventilation of stores and work areas. Do not breathe vapour/spray.

STORAGE:

Keep away from food, drink and animal feeds. Keep out of reach of children. Do not re-use container for any other purpose. Store in original container tightly closed, in a safe place. Keep away from heat. Protect against moisture and protect from direct sunlight. Protect from temperatures below (0°C) and above (40°C).

WASTE DISPOSAL:

On emptying the container, triple rinse thoroughly by using an integrated pressure rinsing device or manually rinsing three times. Add washings to sprayer at time of filling. Perforate or puncture holes on empty containers and dispose off in accordance with National legislation and Regulation. DO NOT RE-USE empty containers for any other purpose.

LEAK AND SPILLS:

Wear protective clothing as outlined above.

For small amounts: Pick up with suitable absorbent material (e.g. sand, sawdust, general-purpose binder, kieselguhr).

For large amounts: Dike spillage. Pump off product.

Dispose of absorbed material in accordance with regulations. Collect waste in suitable containers, which can be labeled and sealed. Clean contaminated floors and objects thoroughly with water and detergents, observing environmental regulations.

ENVIRONMENTAL HAZARDS:

Stomp® 455 CS is very toxic to aquatic life with long lasting effects. Do not contaminate water with the product or its container. Do not clean application equipment near surface water. Avoid contamination via drains from farmyards and roads.

FIRST AID MEASURES:

General advice: Avoid contact with the skin, eyes and clothing. Take off immediately all contaminated clothing. If difficulties occur in breathing, obtain medical attention. Show container, label and /or safety data sheet to physician.

If inhaled: Keep patient calm, remove to fresh air and seek medical attention.

Skin contact: After contact with skin, wash immediately with plenty of water and soap. If irritation develops, seek medical attention.

Eye contact: Immediately wash affected eyes for at least 15 minutes under running water, with eyelids open. Consult an eye specialist.

Ingestion: Do not induce vomiting unless told to by a poison control center or doctor. Rinse mouth immediately and then drink plenty of water, seek medical attention.

TAKE PATIENT TO DOCTOR.

TOXICOLOGICAL INFORMATION:

Signs and Symptoms of Poisoning: No cases of human poisoning have been reported.

Antidote: No specific antidote. Treat symptomatically.

Note to physician: Treat according to symptoms (decontamination, vital functions).

In case of poisoning call Toll Free number 0800720021/0800730030 (24Hrs).

NOTICE TO USER:

This pest control product is to be used only in accordance with the directions on this label. It is an offence under the Pest Control Products Act to use or store a pest control product under unsafe conditions.

WARRANTY:

Seller's guarantee is limited to the terms set out on the label and subject there, to the buyer who assumes the risks to persons or property arising from the use or handling of this product and accepts the product on that condition.

Stomp® 455 CS

MAPENDEKEZO YA UTUMIAJI:

Stomp® 455 CS ni dawa ya kwekwe iliyo na uwezo wa kuchagua mimea ya shayiri na ambayo inatumika kabla ya mimea kumea ili kudhibiti magugu aina ya nyasi – *Setaria* na magugu ya matawi mapana na aina za nyasi kwenye ngano miwa na mahindi.

Stomp® 455 CS imependekeza kutumiwa katika shayiri kudhibiti kwekwe aina ya nyasi ya setaria.

MAELEZO YA KUCHANGANYA:

1. Jaza tanki la kunyunyizia na maji safi hadi nusu.
2. Ukiwa unatingisha bomba jaza kiasi cha Stomp® 455 CS kinachohitajika na uongeze kwenye tanki la kunyunyizia.
3. Jaza tanki hilo na maji safi na uendeleo kuchanganya na kutikisa.

KIPIMO CHA KUTUMIA/MUDA WA KURUDIA

Mmea	Magugu	Kipimo (L/ha)	Wakati wa kunyunyiza	Maelezo
Shayiri	<i>Setaria</i> spp	3.0 au mililita 300/lita	Nyunyiza Stomp® 455 CS, mara moja kwa msimu, punde tuunapomaliza kupanda	Stomp® 455 CS ni dawa aina ya vidonge na inaweza kunyunyiziwa kwa mchanga usio na unyevu. Matokeo bora zaidi yatapatikana ikiwa mvua itanyesha au maji kunyunyiziwa kabla ya siku saba baada ya dawa kunyunyiziwa.
Ngano	Aina ya magugu yanayozuiwa yapo hapo chini	20 za maji	Nyunyiza kabla ya magugu kumea kwenye mimea wa miwa na miwa iliyovunwa na vichuguu kuwachwa kuota tena.	
Mahindi		Tumia Lita 200 za maji kwa hekta		
Miwa		3.5 au mililita 350/lita		
		20 za maji		
		Tumia Lita 200 za maji kwa hekta		

MUDA SALAMA KABLA YA KUVUNA: Siku 90 kwa Shayiri, Ngano na Mahindi.

MAGUGU YANAYODHIBITIWA NA Stomp® 455 CS:

Aina ya Nyasi

Jina la Kisayansi	Jina la kawaida
<i>Brachiaria brizantha</i>	Signal grass
<i>Chloris virgata</i>	Feather top chloris
<i>Chloris pycnothrix</i>	Spider web chloris
<i>Digitaria sanguinalis</i>	Crab finger grass
<i>Echinochloa colona</i>	Jungle grass
<i>Echinochloa crus-galli</i>	Barnyard grass
<i>Eleusine indica</i>	Goose grass
<i>Eragrostis spp.</i>	Love grass
<i>Panicum schinzii</i>	Sweet buffalo grass
<i>Rottboellia conchinchinensis</i>	Guinea fowl grass

<i>Setaria verticillata</i>	Sticky bristle grass
<i>Tragus racemosus</i>	Bur bristle grass
<i>Urochloa panicoides</i>	Garden urochloa

Aina ya magugu yenye majani mapana

<i>Jina la Kisayansi</i>	Jina la kawaida
<i>Amaranthus hybridus</i>	Pigweed
<i>Amaranthus spinosus</i>	Red pigweed
<i>Amaranthus thurnbergii</i>	Thorny pigweed
<i>Chenopodium album</i>	White goosefoot
<i>Portulaca oleracea</i>	Common purslane
<i>Richardia scarbra</i>	Mexican clover

MUDA WA KUNGOJA KABLA KUIINGIA MAHALI PALIPONYUNYIZIWA DAWA: Masaa 24, isipokuwa kama uko na mavazi ya kujikinga.

UZOEFU WA MAGUGU:

Kwa kuzuia uzoefu wa magugu, Stomp 455 CS ni kiagugu ya aina ya kundi la HRAC Code K1. Idadi yeyote ya magugu yaweza kuwa na magugu yaliyosugu kwa Stomp 455 SC na kiuagugu wengine wa Code K1.

Kuchelewesha uzoefu wa Magugu;

- Kwa kuzuia uzoefu wa magugu kutokana na mchanganyiko huu, viuagugu hivi na vingine vya kikundi kimoja na hiki vinapendekezwa visifuatanishwe na mchanganyiko huu kwenye msimu mmoja.
- Kwa mchanganyiko au kufuatanisha na viuagugu vingine vya vikundi tofauti, angalia kwenye vibandiko vya matumizi.
- Uunganisha na njia nyingine ya udhibiti (kemikali na kiutamaduni), katika mipango ya kuzuia kwekwe.

TAHADHARI KWA MTUMIAJI:

Usile, usinywe wala usivute sigara unapotumia dawa hii. Unapotumia dawa ya Stomp 455 CS linda macho ukitumia miwani iliyopendekezwa, vaa nguo za kujikinga kama vile glovu. Overoli na gambuti. Wakati wa kunyunyiza vaa kofia, glovu na gambuti zilizopendekezwa. Osha mikono na ngozi iliyoachiliwa kabla ya kula, kunywa, kuvuta sigara, ama kwenda kwa haja. Oga mwili baada ya kazi na ufue nguo za kujikinga na madhara ya dawa kabla ya kuzitumia tena. Hakikisha kuna hewa safi kwenye chumba cha kuhifadhi dawa.

KUHIFADHI:

Weka dawa ndani ya pakiti yake halisi mahali ambapo ni salama, pakavu, na pasipo na joto nyingi, penye hewa nyingi mbali na chakula na watoto. Weka mahali palipo na joto ya nyuzi isiyo chini ya 0°C na iliyozidi 40°C.

KUTUPA MABAKI:

Osha chombo cha dawa mara tatu na umwage ule mwosho kwenye tanki la kunyunyizia. Haribu chombo cha dawa kwa kutoboa mashimo baada ya kuitumia dawa yote iliyomo halafu itupe mahali pazuri mbali na mto kuambatana na sheria zilizoko kwenye nchi. USITUMIE KWA MATUMIZI INGINE.

DAWA IKIMWAGIKA:

Jikinge na nguo na vifaa vya kuzuia madhara ya dawa. Panguza dawa iliyomwagika na mchanga au 'sawdust'. Osha mahali au vifaa vilivyomwagikiwa na dawa kwa maji mengi na sabuni.

HADHARI KWA MAZINGIRA:

Stomp® 455 CS Ina madhara kwa samaki na viumbe vingine vinavyoishi kwenye maji. Usichafue vidimbwi vya maji kwa dawa hii au mabaki yake. Usioshe vyombo vilivyotumika karibu na mito. Usimwage mabaki kwenye nyumba za wanyama au barabara.

HUDUMA YA KWANZA:

Mashauri: Hakikisha dawa isimwagikie ngozi, macho na mavazi. Vua mavazi yenye dawa mara moja. Ukihisi hali mbaya ya afya utumiapo dawa hii, tafadhali muone daktari na umuonyeshe kibandiko cha dawa hii.

Ikiwa imeingizwa: Weka mgonjwa atulie, mukee kwenye hewa safi na utafute matibabu.

Kushikwa kwa Ngozi: Baada ya kuguswa na dawa kwa ngozi. Osha kwa maji mengi na sabuni. Kuwashwa kwa ngozi kukitokea, pata ushauri wa matibabu.

Kushikwa kwa Macho: Osha macho yaliyoathiriwa kwa muda wa dakika 15 chini ya maji ya kukimbia na kope la jicho likifunguliwa wazi. Wasiliana na mtaalamu wa jicho.

Kumeza: Usiruhusu kutapika isipokuwa kama umeambiwa na kituo cha udhibiti wa sumu au daktari. Suuza mdomo mara moja na kisha kunywa maji mengi, tafuta matibabu.

PELEKA MJERUHI KWA DAKTARI.

MAELEZO KUHUSU SUMU:

Dalili ya kusumika: Hakuna mahali kiuakuvu hiki kimeonekana kuwadhuru watu.

Kiuasumu: Hakuna tiba ijulikanayo kwa sasa.

Maagizo kwa daktari: Tibu mgonjwa kulingana na dalili za ugonjwa.

Wakati wa madhara piga nambari bila malipo 0800720021/0800730030 (Masaa 24).

ILANI KWA WATUMIAJI:

Dawa hii sharti itumiwe kulingana na maagizo kwenye kibandiko hiki tu. Ni hatia chini ya Sheria za madawa ya kuangamiza wadudu waharibifu kutumia au kuweka dawa hii mahala pasipo usalama.

THIBITISHO:

Dhamana ya Muuzaji ni maelezo yaliyo kwenye kibandiko ambayo ni lazima yafuatwe kikamilifu. Mnunuzi lazima akubali hatari zozote zinaweza kutokana na matumizi ya dawa hii kwa binadamu au mali na lazima aikubali dawa hii katika hali hiyo.