



We create chemistry

ml  
800

# Collis® 300 SC

700

Suspension Concentrate  
FUNGICIDE (KIUKUVU)

**GUARANTEE (DHAMANA):**  
Boscalid 200 g/l  
Kresoxim-methyl 100 g/l

600

**COMMERCIAL AND AGRICULTURAL CLASS  
(KUNDI LA KILIMO NA BIASHARA)**

GROUP (KUNDI)	7	11	FUNGICIDE (KIUKUVU)
------------------	---	----	------------------------

A systemic fungicide for the control of powdery mildew on roses.  
(Kiukuvu cha kuzuia magonjwa ya ubwiri unga kwenye maua ya waridi.)

500

**Shelf life:** Two years from the date of manufacture in tightly sealed original unopened container under cool and dry storage conditions.

**(Maisha Rafuni):** Miaka miwili kutoka tarehe ya kutengenezwa ikiwa katika chombo chake maalum isipofunguliwa na ikiwekwa katika pahali pakavu pasipo na joto jingi.)

400

**In case of poisoning call Toll Free number 0800720021/0800730030 (24Hrs).  
(Wakati wa madhara piga nambari bila malipo 0800720021/0800730030 (Masaa 24).)**

# 1 L

**Net Content (Kipimo Kamili):**

**WHO Class III: Slightly Hazardous**

200  
ml



**CAUTION  
(TAHADHARI)**



**READ THE LABEL BEFORE USING  
(SOMA KIBANDIKO CHA MAELEZO  
KABLA YA KUTUMIA)**

**KEEP LOCKED OUT OF REACH OF  
CHILDREN  
(WEKA MBALI NA WATOTO)**

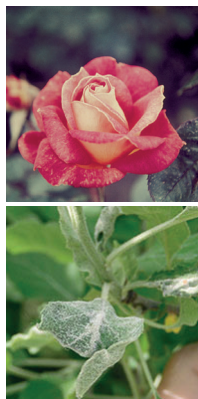
**REGISTRATION NO. (NAMBARI YA USAJILI): PCPB (CR) 0453**

**AGENT (AJENTI):**  
BASF EAST AFRICA LIMITED  
P.O. BOX 24271-00100  
NAIROBI  
TELEPHONE: +254 20 407-2000  
Email: info.eastafrica@basf.com

**MANUFACTURING DATE: SEE ANOTHER PLACE ON THE LABEL OR  
PACKAGING  
(TAREHE YA KUTENGENEZWA): (MAELEZO YAPO KWINGINE KWENYE  
KIBANDIKO HIKI)**

**BATCH NUMBER: SEE ANOTHER PLACE ON THE LABEL OR PACKAGING  
(NAMBARI YA FURUSHI): (MAELEZO YAPO KWINGINE KWENYE KIBANDIKO  
HIKI)**

**EXPIRY DATE: SEE ANOTHER PLACE ON THE LABEL OR PACKAGING  
(TUMIA KABLA YA): (MAELEZO YAPO KWINGINE KWENYE KIBANDIKO HIKI)**



Protect to Provide  
Membership Number: AAK/220  
Nambari ya Usinachama: AAK/220



4 0 14348 654 104

© = Registered trademark of BASF (Alama ya biashara iliyosajiliwa ya BASF)

81143307 KE 2050



## Collis® 300 SC

### DIRECTIONS FOR USE:

Collis® 300 SC is a systemic fungicide with protective activity, for the control of powdery mildew (*Sphaerotheca pannosa*) in roses when used before symptoms appear.

### MODE OF ACTION:

Collis® 300 SC contains Boscalid and Kresoxim-methyl which belongs to the chemical class of Carboxanilide and Strobilurin respectively. It works by inhibiting spore germination and mycelia growth which prevents the fungal growth.

### MIXING INSTRUCTIONS:

Half fill the spray tank with clean water and start agitation. Shake the product well before opening, measure the required amount of Collis® 300 SC and add into the spray tank. Fill the tank with clean water and continue agitation or recirculation. Continue agitation during spraying.

### RATE OF APPLICATION/SPRAY INTERVAL

Crop	Target Pest	Rate	Remarks
Roses	Powdery mildew ( <i>Sphaerotheca pannosa</i> )	1 L / ha in a minimum of 1000 L water / ha 20 ml / 20 L of water	Spray preventatively, repeat every 7-10 days depending on disease pressure. Use Collis® 300 SC in a spray program in alternation with other fungicides with different mode of action. It should not be applied more than 50 % of the total number of applications. Strobilurin containing products should not be used as alternative products.

**NOTE:** Under conditions of high infection pressure, heavy rainfall and excessive leaf development, the shorter interval of 7 days should be used.

**RE ENTRY INTERVAL:** 24 Hours, unless wearing protective clothing

### RESISTANCE MANAGEMENT:

In order to minimise risk of resistance development, Collis® 300 SC should be used in a spray program with products of different cross-resistant group, mode of actions. Collis® 300 SC contains kresoxim-methyl (a Qol inhibitor, group 11) and boscalid (SDHI carboxamide, group 7) and apply it according to label recommendations. The number of applications should be no more than ½ (50%) of the total number of fungicide application per season.

### SAFETY PRECAUTIONS:

Ensure thorough ventilation of stores and work areas. No special measures necessary if stored and handled correctly. When using do not eat, drink or smoke. Hands and/or face should be washed before breaks and at the end of the shift.

### STORAGE:

Ensure thorough ventilation of stores and work areas. No special precautions necessary. The substance/product is non-combustible. Product is not explosive. Segregate from foods and animal feeds. Keep away from heat. Protect from direct sunlight.

### WASTE DISPOSAL:

On emptying the container, triple rinse thoroughly by using an integrated pressure rinsing device or manually rinsing three times. Add washings to sprayer at time of filling. Perforate or puncture holes on empty containers and dispose off in accordance with National legislation and Regulation. DO NOT RE-USE empty containers for any other purpose.

### LEAK AND SPILLS:

Do not breathe vapour/spray. Use personal protective clothing. Avoid contact with the skin, eyes and clothing. For small amounts: Pick up with suitable absorbent material (e.g. sand, sawdust, general-purpose binder, kieselguhr). For large amounts: Dike spillage. Pump off product. Dispose of absorbed material in accordance with regulations. Collect waste in suitable containers, which can be labeled and sealed. Clean contaminated floors and objects thoroughly with water and detergents, observing environmental regulations.

### ENVIRONMENTAL HAZARDS:

Very toxic to aquatic organisms may cause long-term adverse effects in the aquatic environment. Do not contaminate surface waters or ditches with chemical or used containers.

### FIRST AID MEASURES:

**General advice:** First aid personnel should pay attention to their own safety. If the patient is likely to become unconscious, place and transport in stable sideways position (recovery position). Immediately remove contaminated clothing.

**If Inhaled:** Keep patient calm, remove to fresh air and seek medical attention.

**Skin contact:** Wash thoroughly with soap and water.

**Eye contact:** Immediately wash affected eyes for at least 15 minutes under running water, with eyelids open.

**Ingestion:** Immediately rinse mouth and then drink 200-300 ml of water, seek medical attention.

### TAKE PATIENT TO DOCTOR.

### TOXICOLOGICAL INFORMATION:

**Signs and Symptoms of Poisoning:** Suspected of causing cancer, May produce an allergic reaction. Contains: 2-methylisothiazol-3(2H)-one

**Antidote:** Treat according to symptoms (decontamination, vital functions), no known specific antidote.

**Note to physician:** Treat according to symptoms (decontamination, vital functions).

**In case of poisoning call Toll Free number 0800720021/0800730030 (24Hrs).**

### NOTICE TO USER:

This pest control product is to be used only in accordance with the directions on this label. It is an offence under the Pest Control Products Act to use or store a pest control product under unsafe conditions.

### WARRANTY:

Seller's guarantee is limited to the terms set out on the label and subject there, to the buyer who assumes the risks to persons or property arising from the use or handling of this product and accepts the product on that condition.

## Collis® 300 SC

### MAPENDEKEZO YA UTUMIAJI:

Collis® 300 SC ni kiukavu cha mimea cha kudhibiti ubwiri unga kwenye maua aina ya waridi ikitumika kabla ya magonjwa kutokea na kuenea.

### JINSI INAVYOFANYA KAZI:

Collis® 300 SC ina Boscalid na Kresoxim-methyl ambayo ni ya darasa la kemikali la 'Carboxanilide' na 'Strobirilin' kwa mtiiririko huo. Inafanya kazi kwa kuzuia ukuaji wa 'spore' na ukuaji wa 'mycelia' ambao huzuia ukuaji wa vimelea.

### MAELEZO YA KUCHANGANYA:

Jaza tanki la kunyunyizia na maji safi hadi nusu. Tingiza dawa vizuri kabla ya kuifungua kisha upime kiasi cha Collis® 300 SC kinachohitajika na uongeze kwenye tanki la kunyunyizia. Jaza tanki hilo na maji safi na uendelee kuchanganya na kutikisa. Endelea kukoroga vizuri unaponyunyizia.

### KIPIMO CHA KUTUMIA/MUDA WA KURUDIA

Maua	Ugonjwa	Kipimo (Lita/hekta)	Maelezo
Waridi	Ugonjwa wa Ubwiri unga	lita 1/hekta ukitumia maji lita 1000 Tumia mililita 20 kwa lita ishirini ya maji	Nyunyizia kabla ya magonjwa kutokea na kuenea. Rudia kunyunyizia baada ya siku 7 hadi 10 kulingana na hali ya ugonjwa. Nyunyizia Collis® 300 SC mara 3 mfululizo -halafu badilisha na kunyunyizia aina nyingine za dawa kama . Endelea hivyo kubadilisha Collis® 300 SC na madawa mengine mpaka mwisho wa msimu. Dawa zilizo na Strobirilin hazipaswi kutumiwa kwa niaba ya kubadilisha Collis® 300 SC Katika hali juu ya kueneza ugonjwa,mvua na kuota kwa Matawi, kiwango kifupi cha siku saba kinapaswa kutumiwa.

**MUDA WA KUNGOJA KABLA KUIINGIA MAHALI PALIPONYUNYIZIWA DAWA:** Usiingie mahala paliponyunyiziwa dawa kabla ya dawa kukauka na kabla ya masaa 24 kuisha.

### KUZUIA UZOEFU WA KUVU:

Kwa kuzuia uzoefu wa kuvu, Collis® 300 SC inapaswa kutumiwa na madawa mengine ya vikundi vingine yaliyo na utendaji kazi tofauti. Collis® 300 SC ina 'Kresoxim-methyl'(Qol inhibitor, kundi 11) na Boscalid (SDHI carboxamide, kundi 7) na inafaa itumike kulingana na Maagizo ya lebo. Utumizi wa dawa haipaswi kuwa zaidi ya asilimia hamsini ya jumla ya idadi ya matumizi ya kuvu kwa msimu.

### TAHADHARI KWA MTUMIAJI:

Epuka kuguzana kwa dawa na ngozi ya mwili. Kinga macho Kutokana na dawa. Oga na sabuni na maji baada ya kutumia dawa usivute mvuke au vumbi ya dawa. Usile, usinywe na usivute sigara wakati wa kuichanganya na kunyunyizia dawa kabla huja nawa mikono au uso. Zuia mivuke ya dawa kufikia mimea mingine isiyohusika, malisho ya wanyama, mito na bomba za kuzuia maji. Valia glavu na miwani ya macho wakati wa kuchanganya dawa. Zuia dawa kugusana na chakula cha watu, cha mifugo, maji ya kunywa na vyombo vyakulia. Osha bomba baada ya kunyunyizia dawa.

### KUHIFADHI:

Hifadhi dawa ndani ya pakiti yake halisi mahali ambapo ni salama, kavu, na hakuna joto nyingi, penye hewa nyingi na ni mbali na chakula na watoto hawawezi kufikia.

### KUTUPA MABAKI:

Osha chombo cha dawa mara tatu na umwage ule mwosho kwenye tanki la kunyunyizia. Haribu chombo cha dawa kwa kutoboa mashimo baada ya kuitumia dawa yote iliyomo halafu itupe mahali pazuri mbali na mto kuambatana na sheria zilizoko kwenye nchi. USITUMIE KWA MATUMIZI INGINE.

### DAWA IKIMWAGIKA:

Vaa mavazi ya kujikinga kama ulivyoelzwa hapo juu. Angalia usizushe vumbi. Pangusa dawa iliyomwagika na mchanga au vumbi inayopatikana wakati mbao inapopasuliwa. Safisha mahali palipomwagikiwa na dawa kwa maji mengi yaliyo na sabuni.

### HADHARI KWA MAZINGIRA:

Collis® 300 SC ina madhara kwa samaki na viumbe vingine vinavyoishi kwenye maji. Usichafue vidibwi vya maji kwa dawa hii au mabaki yake. Usioshe vyombo vilivyotumika karibu na mito. Usimwage mabaki kwenye nyumba za wanyama au barabara.

### HUDUMA YA KWANZA:

**Mashauri:** Ukihisi hali mbaya ya afya utumiapo dawa hii, tafadhali muone daktari na umuonyeshe kibandiko cha dawa hii.

**Ikiwa imeingizwa:** Weka mgonjwa atulie, muke kwenye hewa safi na utafute matibabu.

**Kushikwa kwa Ngozi:** Osha vizuri kwa sabuni na maji.

**Kushikwa kwa Macho:** Osha macho yaliyoathiriwa kwa muda wa dakika 15 chini ya maji ya kukimbia na kope la jicho likifunguliwa wazi.

**Kumeza:** Mara moja suza mdomo na kisha kunywa mililita 200-300 ya maji, tafuta matibabu.

### PELEKA MJERUHI KWA DAKTARI.

### MAELEZO KUHUSU SUMU:

**Dalili ya kusumika:** Inayoshukiwa kusababisha saratani, Inaweza kuwa na athari ya mzio, kwasababu ina ,2-methylisothiazol-3(2H)-one'.

**Kinga ya Hatari:** Hakuna tiba ijulikanayo kwa sasa. Tibu kufuatia dalili za ugonjwa.

**Maagizo kwa daktari:** Tibu mgonjwa kulingana na dalili za ugonjwa.

**Wakati wa madhara piga nambari bila malipo 0800720021/0800730030 (Masaa 24).**

### ILANI KWA WATUMIAJI:

Dawa hii sharti itumiwe kulingana na maagizo kwenye kibandiko hiki tu. Ni hatia chini ya Sheria za madawa ya kuangamiza wadudu waharibifu kutumia au kuweka dawa hii mahala pasipo usalama.

### THIBITISHO:

Dhamana ya Muuzaji ni maelezo yaliyo kwenye kibandiko ambayo ni lazima yafuatwe kikamilifu. Mnuuzi lazima akubali hatari zozote zinaweza kutokana na matumizi ya dawa hii kwa binadamu au mali na lazima aikubali dawa hii katika hali hiyo.



We create chemistry

ml  
800

# Collis® 300 SC

700

Suspension Concentrate  
FUNGICIDE (KIUAKUVU)

**GUARANTEE (DHAMANA):**  
Boscalid 200 g/l  
Kresoxim-methyl 100 g/l

600

**COMMERCIAL AND AGRICULTURAL CLASS**  
(KUNDI LA KILIMO NA BIASHARA)

GROUP (KUNDI)	7	11	FUNGICIDE (KIUAKUVU)
------------------	---	----	-------------------------

A systemic fungicide for the control of powdery mildew on roses.

(Kiuakuvu cha kuzuia magonjwa ya ubwiri unga kwenye maua ya waridi.)

500

**Shelf life:** Two years from the date of manufacture in tightly sealed original unopened container under cool and dry storage conditions.

(Maisha Rafuni: Miaka miwili kutoka tarehe ya kutengenezwa ikiwa katika chombo chake maalum isipofunguliwa na ikiwekwa katika pahali pakavu pasipo na joto jingi.)

400

**In case of poisoning call Toll Free number 0800720021/0800730030 (24Hrs).**  
(Wakati wa madhara piga nambari bila malipo 0800720021/0800730030 (Masaa 24).)

# 1 L

**Net Content (Kipimo Kamili):**

**WHO Class III: Slightly Hazardous**

200  
ml



**CAUTION  
(TAHADHARI)**



**READ THE LABEL BEFORE USING  
(SOMA KIBANDIKO CHA MAELEZO  
KABLA YA KUTUMIA)**

**KEEP LOCKED OUT OF REACH OF  
CHILDREN  
(WEKA MBALI NA WATOTO)**

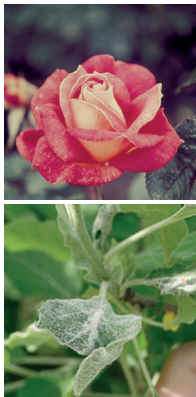
**REGISTRATION NO. (NAMBARI YA USAJILI): PCPB (CR) 0453**

**AGENT (AJENTI):**  
BASF EAST AFRICA LIMITED  
P.O. BOX 24271-00100  
NAIROBI  
TELEPHONE: +254 20 407-2000  
Email: info.eastafrica@basf.com

**MANUFACTURING DATE: SEE ANOTHER PLACE ON THE LABEL OR  
PACKAGING  
(TAREHE YA KUTENGENEZWA): (MAELEZO YAPO KWINGINE KWENYE  
KIBANDIKO HIKI)**

**BATCH NUMBER: SEE ANOTHER PLACE ON THE LABEL OR PACKAGING  
(NAMBARI YA FURUSHI): (MAELEZO YAPO KWINGINE KWENYE KIBANDIKO  
HIKI)**

**EXPIRY DATE: SEE ANOTHER PLACE ON THE LABEL OR PACKAGING  
(TUMIA KABLA YA): (MAELEZO YAPO KWINGINE KWENYE KIBANDIKO HIKI)**



Protect to Provide

Membership Number: **AAK/220**  
Nambari ya Usanachama: **AAK/220**



4 0 14348 654 104

© = Registered trademark of BASF (Alama ya biashara iliyosajiliwa ya BASF)

81143307 KE 2050

