

READ THE LABEL BEFORE USING
(SOMA KIBANDIKO CHA MAELEZO KABLA YA
KUTUMIA)

KEEP LOCKED OUT OF REACH OF CHILDREN
(WEKA MBALI NA WATOTO)

 **BASF**

We create chemistry

Nomolt® 150 SC

Suspension Concentrate
INSECTICIDE (KIUADUDU)

GUARANTEE (DHAMANA): Teflubenzuron 150 g/l

COMMERCIAL AND AGRICULTURAL CLASS (KUNDI LA KILIMO NA BIASHARA)

Insecticide for control of coffee leaf miner in Coffee, Diamondback moth and aphids on cabbages, bean flower thrips in french beans and thrips in carnations and roses.

Kiuadudu kinachotumika kuzuia wadudu wanaochimba mitaro kwa matawi ya kahawa 'Coffee Leaf Miner'; 'Diamondback moth' na nzi mafuta, kwenye kabeji; na vithiripi kwenye maharagwe aina ya 'french beans na kwenye maua aina ya, carnations' na 'roses'.

Shelf life: Two years from the date of manufacture in tightly sealed original unopened containers under cool and dry storage conditions.

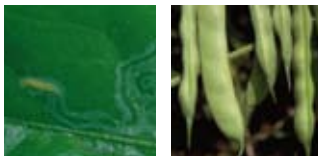
(Maisha Rafuni): Miaka miwili kutoka tarehe ya kutengenezwa ikiwa katika chombo chake maalum kisichofunguliwa na ikiwekwa katika pahali pakavu pasipo na joto jingi).

In case of poisoning call Toll Free number 0800720021 / 0800730030 (24 Hrs)

(Wakati wa madhara piga nambari bila malipo 0800720021 / 0800730030 (masaa 24))

Net Content (Kipimo Kamili): 1 L

WHO Class III: Slightly hazardous



REGISTRATION NO. (NAMBARI YA USAJILI):
PCPB (CR) 0969

MANUFACTURER/REGISTRANT
(MTENGENEZAJI):
BASF SE, GERMANY

AGENT (AJENTI):
BASF EAST AFRICA LTD
P.O. BOX 24271-00100
NAIROBI
TELEPHONE: +254 20 4443454

MANUFACTURING DATE: SEE ANOTHER PLACE ON THE LABEL
(TAREHE YA KUTENGENEZWA): (MAELEZO YAPO KWINGINE KWENYE KIBANDIKO HIKI)

BATCH NUMBER: SEE ANOTHER PLACE ON THE LABEL
(NAMBARI YA FURUSHI): (MAELEZO YAPO KWINGINE KWENYE KIBANDIKO HIKI)

EXPIRY DATE: SEE ANOTHER PLACE ON THE LABEL
(TUMIA KABLA YA): (MAELEZO YAPO KWINGINE KWENYE KIBANDIKO HIKI)



Protect to Provide
MEMBERSHIP NUMBER AAK/220

® = Registered Trademark of BASF

81118818KE1077



**CAUTION
TAHADHARI**



DIRECTIONS FOR USE:

Nomolt® 150 SC is an IGR that controls coffee leaf miner in coffee, diamond backmoth& aphids on cabbages; bean flower thrips in french beans and thrips in carnations and roses. It's used to control larvae stages.

MODE OF ACTION:

Nomolt® 150 SC is an acylurea insecticide that acts principally through ingestion. The a.i. Teflubenzuron inhibits chitin production during cuticle development in insect juvenile stages. Failure of the cuticle to develop fully causes death during the molting process. Best performance will be obtained in the pest infestation as a preventive treatment or as a curative treatment to young larvae stages.

MIXING INSTRUCTIONS:

Fill the spray tank halfway with water. Start agitator mechanism and slowly add the required amount of Nomolt® 150 SC. Add water to the final volume required with continuous agitation.

RATE OF APPLICATION/SPRAY INTERVAL:

Crops	Pests	Rate/Ha	Directions for use
Coffee	coffee leaf miner (Leucoptera meyricki)	0.75 - 1L/Ha in 1000L of water (15-20ml/20L water)	Use a twin-fan nozzle. A week after about 35 moths per tree are seen (when the tree is vigorously shaken), the first spray should be done to coincide with low levels of the pest in the pupal stage. If the infestation is severe, a second spray 2 – 3 weeks later can follow. Treated adult insects lay a large proportion of infertile eggs thereby reducing pest levels in the succeeding generation. The highest levels of performance will be obtained when Nomolt® 150 SC is applied just before eggs hatching or to early larvae stages.
Cabbages	DBM and Aphids		
French beans	thrips		
Carnations Roses	thrips		

PRE-HARVEST-INTERVALS	Coffee	30 days
	Cabbages	10 days
	French beans	10 days

RE-ENTRY INTERVAL: 24H, unless wearing protective clothing.

IPM:

The mode of action of Nomolt® 150 SC enables it to be used in a manner that minimizes environmental impact and any potential harm to beneficial arthropods such as lacewings, predatory mites, and ladybirds. Nomolt® 150 SC acts upon larvae and is usually ingested via the foliage. Predators run a minimal risk of being harmed because they do not feed directly on the crop but only on the pests. Also, many predators arrive on the crop as adults when they are not susceptible to Nomolt® 150 SC. In this way the use of Nomolt® 150 SC insecticide helps to promote/enhance any IPM programmes by assisting such beneficials.

RESISTANCE MANAGEMENT: Alternate with insecticides from different mode of action groups. Never treat two successive generations with the same mode of action.

SAFETY PRECAUTIONS:

No special measures necessary if stored and handled correctly. Do not breathe vapour/spray. Use personal protective clothing. Avoid contact with the skin, eyes and clothing. Ensure thorough ventilation of stores and work areas. When using do not eat, drink or smoke. Hands and/or face should be washed before breaks and at the end of the shift. Do not discharge into drains/surface waters/groundwater. Do not discharge into the subsoil/soil.

LEAK AND SPILLS:

Use personal protective clothing.

For small amounts: Pick up with suitable absorbent material (e.g. sand, sawdust, general-purpose binder, kieselguhr).

For large amounts: Dike spillage. Pump off product. Dispose of absorbed material in accordance with regulations. Collect waste in suitable containers, which can be labeled and sealed. Clean contaminated floors and objects thoroughly with water and detergents, observing environmental regulations.

STORAGE:

Keep away from food, drink and animal feeding stuffs. Keep out of reach of children.

Store in original container tightly closed, in a safe place. Keep away from heat. Protect from direct sunlight.

Protect from temperatures below: -5 °C. Changes in the properties of the product may occur if substance/product is stored below indicated temperature for extended periods of time.

Protect from temperatures above: 40 °C. Changes in the properties of the product may occur if substance/product is stored above indicated temperature for extended periods of time.

DISPOSAL:

Must be sent to a suitable incineration plant, observing local regulations. Contaminated packaging should be emptied as far as possible and disposed of the same manner as the substance/product.

ENVIRONMENTAL HAZARDS:

Very toxic to aquatic organisms, may cause long-term adverse effects in the aquatic environment. Do not discharge into drains /surface waters/ground water. Do not discharge into the subsoil/soil.

FIRST AID MEASURES:

General advice: Avoid contact with the skin, eyes and clothing. Take off immediately all contaminated clothing. Show container, label and/or safety data sheet to physician.

If inhaled: Keep patient calm, remove to fresh air and seek medical attention.

Eye contact: Immediately wash affected eyes for at least 15 minutes under running water, with eyelids open. Consult an eye specialist.

Skin contact: After contact with skin, wash immediately with plenty of water and soap. If irritation develops, seek medical attention.

Ingestion: Rinse mouth immediately and then drink plenty of water (200-300 ml), seek medical attention.

TOXICOLOGICAL INFORMATION:

Signs and Symptoms of Poisoning: No significant reaction of the human body to the product known.

Emergency Antidote: No specific antidote. Treat symptomatically.

Note to Physician: Treat according to symptoms (decontamination, vital functions), no known specific antidote.

In case of poisoning call Toll Free number 0800720021/0800730030 (24 Hrs)

TAKE PATIENT TO DOCTOR**NOTICE TO USERS:**

This pest control product is to be used only in accordance with the directions on this label. It is an offence under the Pest Control Products Act to use or store a pest control product under unsafe conditions.

WARRANTY:

Seller's guarantee is limited to the terms set out on this label and subject there to the buyer who assumes the risk to persons or property arising from the use or handling of this product and accepts the product on that condition.

MAPENDEKEZO YA UTUMIAJI:

Nomolt[®] 150 SC inathibiti wanaochimba mitaro kwa matawi ya kahawa 'Coffee Leaf Miner'; 'Diamond backmoth' na 'aphids' kwenye kabeji; na vithiripi kwenye maharagwe aina ya 'french beans na maua aina ya carnation' na roses.

JINSI INAVYOFANYA KAZI:

Dawa halisi iliyoonekana kwenye Nomolt[®] 150 SC-Teflubenzuron ni kiuadudu kinachofanya kazi kupitia kwa kumezwa kinachoathiri gofu la wadudu. Kwa utendaji wa hali ya juu tumia Nomolt kwa kuzuia viluwilwi waoanza kukua.

MAELEZO YA KUCHANGANYA:

Jaza tanki la kunyunyizia na maji safi hadi nusu. Tingiza dawa vizuri kabla ya kuifungua kisha upime kiasi cha Nomolt[®] 150 SC kinachohitajika na uongeze kwenye tanki la kunyunyizia. Jaza tanki hilo na maji safi na uendelea kuchanganya na kutikisa. Endelea kukoroga vizuri unaponyunyizia.

KIPIMO CHA KUTUMIA/MUDA WA KURUDIA:

Mmea	Mdudu	Kiasi/Hekta	Matumizi
Kahawa	'leaf miner (Leucoptera meyricki)'	Lita 0.75-1 katika lita 1000 za maji.	Nyunyizia ukitumia chombo chenye midomo miwili (twin-fan nozzle).
Kabeji	'DBM, nzi mafuta'	(millilita 15-20 katika lita 20 za maji)	Nyunyizia Wiki moja baada ya nondo (moths) 35 wakionekana kwa kila mti unapotikiswa.
Maharagwe ("French beans")	vithiripi		Dawa inyunyizwe mara ya kwanza ili kuzuia viluwilwi wanaoanza kukua. Kama wadudu wakiongezeka kwa wingi, dawa inyunyizwe mara ya pili baada ya wiki 2-3. Wadudu wazima walioipigwa dawa hutaga mayai dhiaifu na kwa njia hii hupunguza kuzaana katika vizazi vijavyo.
Maua ya aina ya carnations na roses	vithiripi		

Usimamizi wa Kuzuia Wadudu Waharibifu (IPM):

Ufanyaji kazi wa Nomolt[®] 150 SC kunairuhusu itumike bila kuyaharibu mazingira au kudhuru wadudu wenye faida mfano: 'lacing', 'predatory mites' na 'ladybirds' kwa kuwa wao hufika kwa mmea wakiwa wazima. Kwa hivyo Nomolt[®] 150 SC inasaidia katika kuendesha mipango ya kuzuia wadudu waharibifu katika kahawa (IPM) kwa kutowadhuru wadudu wafaidishao mkulima (wanaokula wale waharibifu)

NYAKATI ZA KUPIGA DAWA KABLA YA MAVUNO (PHI):

Zao	Muda salama kabla kuvuna (siku)
Kahawa	30
Kabeji	10
Maharagwe (.French beans')	10

MUDA WA KUNGOJA KABLA KUIINGIA MAHALI PALIPONYUNYIZIWA DAWA:

Masaa 24, isipokuwa Kama uko na mavazi ya kujikinga.

TAHADHARI KWA MTUMIAJI:

Jifunike mwili kwa kuvaa koti la mikono mirefu, mifuko ya mikono (gloves), kofia, viatu virefu na kinga ya uso. Usile, usinywe wala usivute sigara unapotumia dawa hii. Nawa mikono kwa maji na sabuni kabla ya kula, kunywa au kuvuta sigara. Safisha na kupiga pasi mavazi yote ya kinga kabla ya kuyatumia tena. Pangusa dawa iliyovuja au kumwagika kwa mchanga, udongo, unga wa mbaao au kitu kingine. kinachofaa, sugua sehemu zilizomwagikiwa kwa sabuni na maji. Usichafue mito au visima vya maji kwa mabaki ya dawa au vyombo vilivyotumiwa.

UWEKAJI

Hifadhi dawa ndani ya pakiti yake halisi mahali ambapo ni salama, kavu, na hakuna joto nyingi, penye hewa nyingi na ni mbali na chakula na watoto hawawezi kufikia. Weka pahali penye joto isiyochini ya nyuzi -5 and isiyozidi nyuzi 40

KUTUPA MABAKI:

Safisha vyombo vilivyokwisha dawa mara tatu ukitia maji hayo katika chombo cha kunyunyizia. Vipondaponde vyombo vitupu ili visitumiwe tena. Viondoshe vipakiti vilivyokwisha kazi mahali palipotengwa mbali na mito au visima vya maji ukifuata sheria.

HADHARI KWA MAZINGIRA:

Ingawa Nomolt[®] 150 SC si dawa yenye sumu inapotumiwa kama ilivyoagizwa, isielekezwe kwenye mito au visima vya maji kwa sababu inaweza kuathiri wanyama na wadudu wadogo wa majini wa aina ya 'arthropods'. Dawa hii inapoingia katika udongo huisha nguvu haraka na haikal katika udongo kwa muda mrefu.

HUDUMA YA KWANZA:

Osha mahali palipopata dawa kwa maji na sabuni.

Ikiwutwa: Peleka mhadhiriwa mahali penye hewa safi na umweke akiwa mtulivu. Mpeleke kwa daktari maumivu yakindelea

Ikiingia kwa Macho: Osha macho kwa maji mengi yanayotiririka kwa muda wa dakika 15 huku ukiwa umeyafungua na vidole.

Ikishika Ngozi: Vua mavazi yenye dawa mara moja na usafishe ngozi iliyopata dawa kwa maji mengi.

Ikimezwa: Usimtapishe mhadhiriwa isipokuwa daktari akikuelezea. Mpe mhadhiriwa maji masafi anywe kisha umpeleke kwa daktari.

MAELEZO KUHUSU SUMU:

Dalili ya kusumika:

Hakuna ripoti kutoka kwa binadamu kuhusu kuingiwa na sumu. Yamkini hakuna sumu kali inayoweza kutokea.

Kiasumu: Hakuna tiba ijulikana yote kwa sasa. Tibu kufuatia dalili za ugonjwa.

Maagizo kwa Daktari: Tibu mgonjwa kulingana na dalili za ugonjwa. Dawa hii ikimezwa usimtapishe mhadhiriwa/mhusika.

Ukihihi hali mbaya ya afya utumiapo dawa hii, tafadhali muone daktari na umonyeshe kibandiko cha dawa hii.

Kukiwa na madhara yoyote piga nambari bila malipo kwa 0800720021/ 0800730030 (Masaa 24)

PELEKA MJERUHI KWA DAKTARI

ILANI KWA WATUMIAJI:

Dawa hii ya kuthibiti wadudu waharibifu itumiwe kulingana na maagizo yaliyo katika kibandiko hiki. Chini ya sheria ya dawa za kuzuia wadudu waharibifu, ni hatia kutumia au kuweka dawa hii mahali pasipo salama

THIBITISHO:

Dhamana ya muuzaji ni maelezo yaliyo kwenye kibandiko ambayo ni lazima yafuatwe kikamilifu. Mnunuzi lazima akubali hatari zozote zinazoweza kutokana na matumizi ya dawa hii kwa binadamu au mali, na lazima aikubali dawa hii katika hali hiyo

READ THE LABEL BEFORE USING
(SOMA KIBANDIKO CHA MAELEZO KABLA YA
KUTUMIA)

KEEP LOCKED OUT OF REACH OF CHILDREN
(WEKA MBALI NA WATOTO)

 **BASF**

We create chemistry

Nomolt® 150 SC

Suspension Concentrate
INSECTICIDE (KIUADUDU)

GUARANTEE (DHAMANA): Teflubenzuron 150 g/l

COMMERCIAL AND AGRICULTURAL CLASS (KUNDI LA KILIMO NA BIASHARA)

Insecticide for control of coffee leaf miner in Coffee, Diamondback moth and aphids on cabbages, bean flower thrips in french beans and thrips in carnations and roses.

Kiuadudu kinachotumika kuzuia wadudu wanaochimba mitaro kwa matawi ya kahawa 'Coffee Leaf Miner'; 'Diamondback moth' na nzi mafuta, kwenye kabeji; na vithiripi kwenye maharagwe aina ya 'french beans na kwenye maua aina ya, carnations' na 'roses'.

Shelf life: Two years from the date of manufacture in tightly sealed original unopened containers under cool and dry storage conditions.

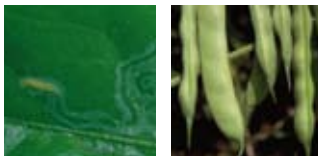
(Maisha Rafuni): Miaka miwili kutoka tarehe ya kutengenezwa ikiwa katika chombo chake maalum kisichofunguliwa na ikiwekwa katika pahali pakavu pasipo na joto jingi).

In case of poisoning call Toll Free number 0800720021 / 0800730030 (24 Hrs)

(Wakati wa madhara piga nambari bila malipo 0800720021 / 0800730030 (masaa 24))

Net Content (Kipimo Kamili): 1 L

WHO Class III: Slightly hazardous



REGISTRATION NO. (NAMBARI YA USAJILI):
PCPB (CR) 0969

MANUFACTURER/REGISTRANT
(MTENGENEZAJI):
BASF SE, GERMANY

AGENT (AJENTI):
BASF EAST AFRICA LTD
P.O. BOX 24271-00100
NAIROBI
TELEPHONE: +254 20 4443454

MANUFACTURING DATE: SEE ANOTHER PLACE ON THE LABEL
(TAREHE YA KUTENGENEZWA): (MAELEZO YAPO KWINGINE KWENYE KIBANDIKO HIKI)

BATCH NUMBER: SEE ANOTHER PLACE ON THE LABEL
(NAMBARI YA FURUSHI): (MAELEZO YAPO KWINGINE KWENYE KIBANDIKO HIKI)

EXPIRY DATE: SEE ANOTHER PLACE ON THE LABEL
(TUMIA KABLA YA): (MAELEZO YAPO KWINGINE KWENYE KIBANDIKO HIKI)



Protect to Provide
MEMBERSHIP NUMBER AAK/220

© = Registered Trademark of BASF

8118818KE1077



CAUTION
TAHADHARI